

PrismAV Installation Guide

COOLFUSION.COM
INNOVATIVE SOFTWARE

Copyrights

PrismAV is a product of On-Line Data Solutions, Inc.

Front cover image is copyright On-Line Data Solutions, Inc.

Trademarks

PrismAV is a trademark of On-Line Data Solutions, Inc.

Microsoft Windows is a trademark of Microsoft Corporation.

ColdFusion is a trademark of Macromedia Corporation.



Copyright © 2003 On-Line Data Solutions, Inc.
Manual revision 1.0

Table of Contents

Overview.....	1
System Requirements.....	2
Installation.....	3
Installing the Virus Scanning Engine.....	3
Configuring the PRISMAV Auto Update Service.....	6
Suggestions and Support.....	9

Overview

PrismAV is an integrated virus scanning solution that allows you to scan and repair virus infected files. It works with a number of products, including PrismAV for iMS (inFusion Mail Server) and PrismAV for ColdFusion (CFX tag). The product combines advanced signature scanning technology with heuristic analysis and macro certification techniques to help prevent both known (and unknown, see “Sandbox” feature below) viruses from infecting your systems. PrismAV automatically updates virus definitions with its Auto-Update Service.

As viruses become more commonplace (toolkits are available on-line for easy virus creation) it becomes increasingly important to be diligent about network security. It is wise to incorporate a system to prevent such virus distribution from your systems.

PrismAV uses a robust and seasoned virus scanning engine developed by Norman Data Defense Systems. This engine has won 20 VB 100% Awards. The VB 100% award is a prestigious industry award that is given to virus scanning engines that have been proven to:

- detect all “In the Wild viruses” during both on-demand and on-access scanning **and**
- Produce no false positives.

(<http://www.virusbtn.com/vb100/archives/products.xml?table>)

This advanced virus-scanning engine is also available with a patent-pending integrated sandbox which will detect malicious code and, therefore, detect unknown viruses as well.

Note: The PrismAV sandbox is not part of the standard PrismAV package but is available separately.

System Requirements

HARDWARE

- Pentium II/300 or higher recommended
- 64 MB memory (128 MB or higher recommended)
- 2 MB disk space for software

SOFTWARE

- Microsoft Windows NT / 2000, 95 or 98 (MS Windows NT Server recommended)

OTHER

The auto update function (which updates virus signatures) requires an internet connection and unblocked access to the standard HTTP port (port 80).

Installation

PrismAV is distributed as a single executable file, PRISMAV54.exe, which can be downloaded from our web site (www.coolfusion.com/downloads).

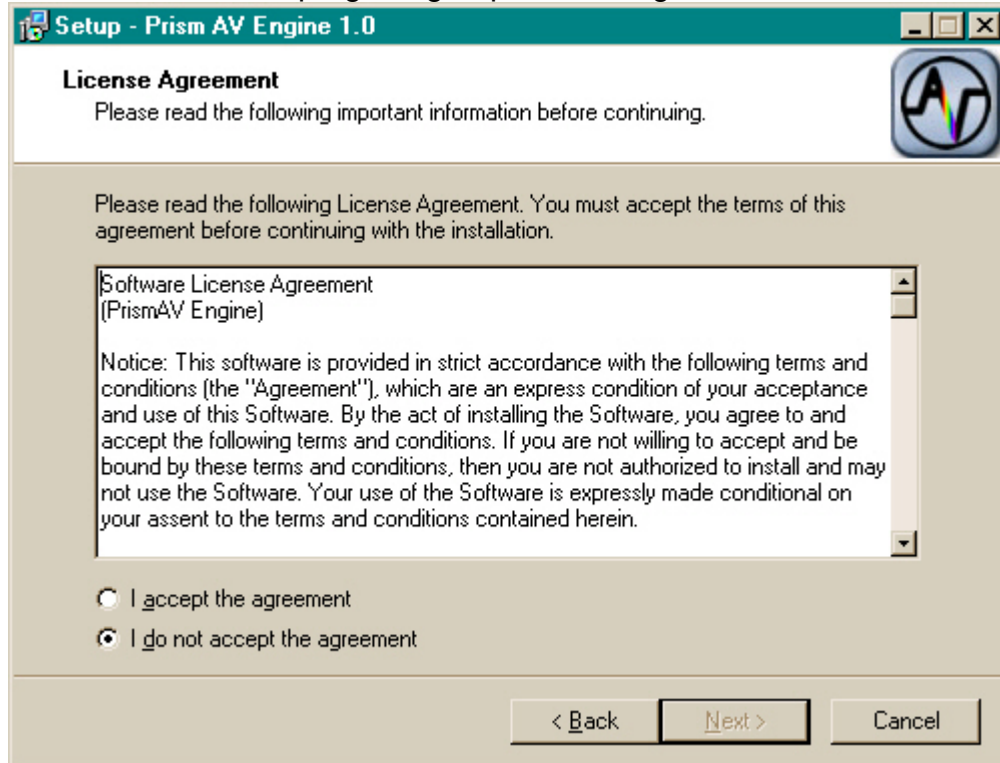
Installing the Virus Scanning Engine

When you start the engine installer you will see an initial installation dialog a welcome screen as shown below:

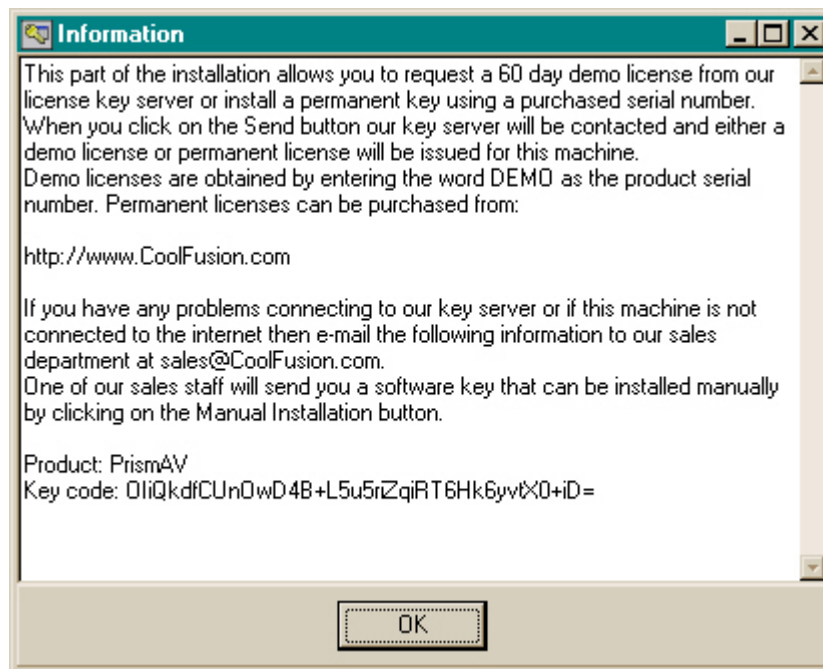


The screen above shows the installer for Prism Engine version 1.0. Click on the "Next" button to continue installation.

You will be prompted to accept the license agreement and select the folders and program group for the engine.



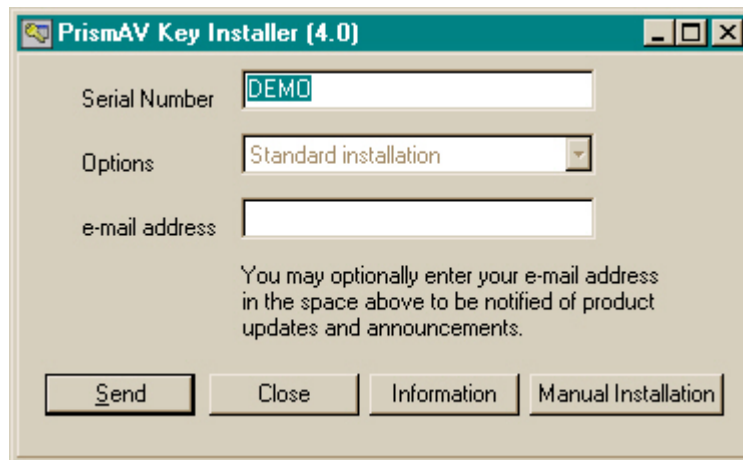
You will be shown an information dialog that includes the key code for your computer.



Note: Product registration requires that your computer have outgoing access to port 80 (standard HTTP port).

If this is not possible, you will need to obtain a software key from our sales department and install the key manually. To request a software key, send an email to sales@coolfusion.com and include the product (PrismAV Engine) and key code (key code is displayed in the last line of the Information box, see above). You will receive an email that contains a software key that can be installed using the “Manual Installation” option.

When you click on the OK button you will be prompted to enter a serial number.



Serial Number: Enter your purchased serial number, or enter DEMO for a 60-day fully functional demonstration version of the software.

Options: Not used.

e-mail Address: Enter your email address to subscribe to our support mailing list.

Click on the Send button to begin the registration process.

Once the installation has completed you can configure the Prism Auto Update settings.

Configuring the PRISMAV Auto Update Service

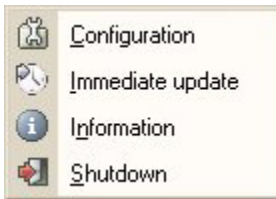
The Auto Update service downloads the most current virus definitions (.DEF files) to your server, ensuring the most up-to-the-minute protection. This service will check for updates when you are connected to the Internet, and will download and apply the .DEF files in the background so you do not need to download and apply these files manually.

Note: For the Auto Update service to run, your computer must have outgoing access to port 80 (standard HTTP port).

The installation process should have started the auto-update engine automatically and you should see the following icon in the Windows task bar:



Right-clicking on this icon will bring up the PrismAV Auto-update engine menu as shown below:



The menu allows you to:

- Schedule the frequency of your virus definition updates
- Request an immediate virus definitions update
- View product information, including subscription expiration date, and last virus definition update
- Shutdown the auto-update engine.

Configuration

Select the Configuration option to bring up the scheduler and email settings shown below:

The screenshot shows the 'PrismAV Auto-update configuration' dialog box. It is divided into two main sections: 'Schedule' and 'Miscellaneous'.
In the 'Schedule' section, the frequency is set to 'Daily' in a dropdown menu. Below it, the 'Select hour' is set to '06:00'. To the right, there are two columns of checkboxes. The first column lists days of the week: Sunday (checked), Monday, Tuesday, Wednesday, and Thursday. The second column lists hours: 1 (checked), 2, 3, 4, and 5.
In the 'Miscellaneous' section, the 'Log Folder' is set to 'C:\PrismAV\Logs\' with a browse button. Below that is an 'Admin email' text box with a 'Test' button. There are two checked checkboxes: 'Email Error Reports' and 'Email Status Reports'. At the bottom is a 'Mail Server' text box.

Schedule: The frequency that your server will check for new virus definitions. *Default:* Daily at 6am.

You may select updates that occur:

- Hourly
- Daily (at a selected hour)
- Weekly (at a selected hour and day or days of the week)
- Monthly (at a selected hour and day or days of the month)

Log Folder: The location of the PrismAV log files
Default: c:\PrismAV\Logs\

Admin email: The email address that will be used for email notifications

Email notifications are separated into two categories:

Error Reports: Errors reported by the Auto Update service. Example: *Error \$xxxx occurred while refreshing engine (Recommended)*

Status Reports: Contain information regarding stop/start of service, signature update information, etc.

Mail Server: The email server to use for sending mail

Test: (Optional) Click on the Test button to make sure that the updater can send you email properly.

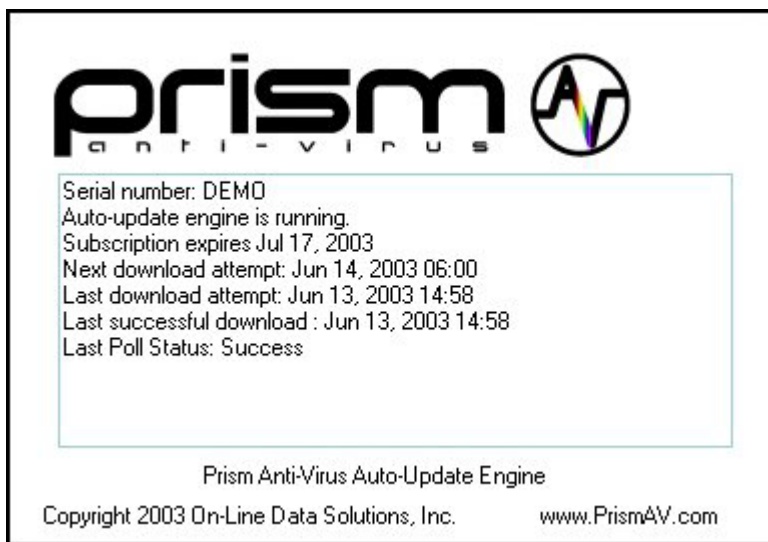
When you are done entering changes, click on the File/Save Settings menu option to save your settings.

Immediate Update

The Immediate Update menu item causes the system to perform an immediate update of virus signatures, bypassing the schedule option.

Information

The Information option displays an information dialog on your screen as shown below.



The information shows the serial number, expiration date and other information pertaining to virus signature updates.

Shutdown

Stops the Auto Update service.

Suggestions and Support

Your comments and suggestions for PrismAV are appreciated. Please email your comments to support@CoolFusion.com. Technical support for iMS is also available from this email address or by joining our support email list. You can join our support list at www.CoolFusion.com/support

On-Line Data Solutions, Inc.
1919 Middle Country Road, Suite 204
Centereach, NY 11720-3501

Phone: (631) 737-4668
FAX: (631) 737-9539
Sales: sales@CoolFusion.com
Technical Support: support@CoolFusion.com